



COAX
INSERTS

The coaxial inserts are slim and sturdy connectors which can withstand high electrical and mechanical force. These are used for stability is populated arrangement where availability of space is low. These are used in telecommunication equipments.

The coaxial inserts are best suited for usage up to 10 GHz frequency in the 50 ohms impedance and 2 GHz in the 75 ohms impedance.

These are available as quick slide-on lock and screw-on versions.

TECHNICAL SPECIFICATIONS

ELECTRICAL		
Impedance	50 Ohms	75 Ohms
Frequency Range	0 – 10 GHz	0 – 2 GHz.
Voltage Rating	750 V rms.	
VSWR	1.30	
Insulation Resistance	1 G Ohm	
Centre Contact	10.0 milli ohms	
Outer Contact	7.5 milli ohms	

ENVIRONMENTAL	
Vibration	JSS 50101 – Test No. 23
Temp. Range	-40°C to + 85°C
Shock	JSS 50101 – Test No. 12
Temp. Cycling	JSS 50101 – Test No. 20

FINISH	
Body & Body components	Gold Plated
Centre Contacts	Gold Plated
Crimp Ferrules	Nickel Plated

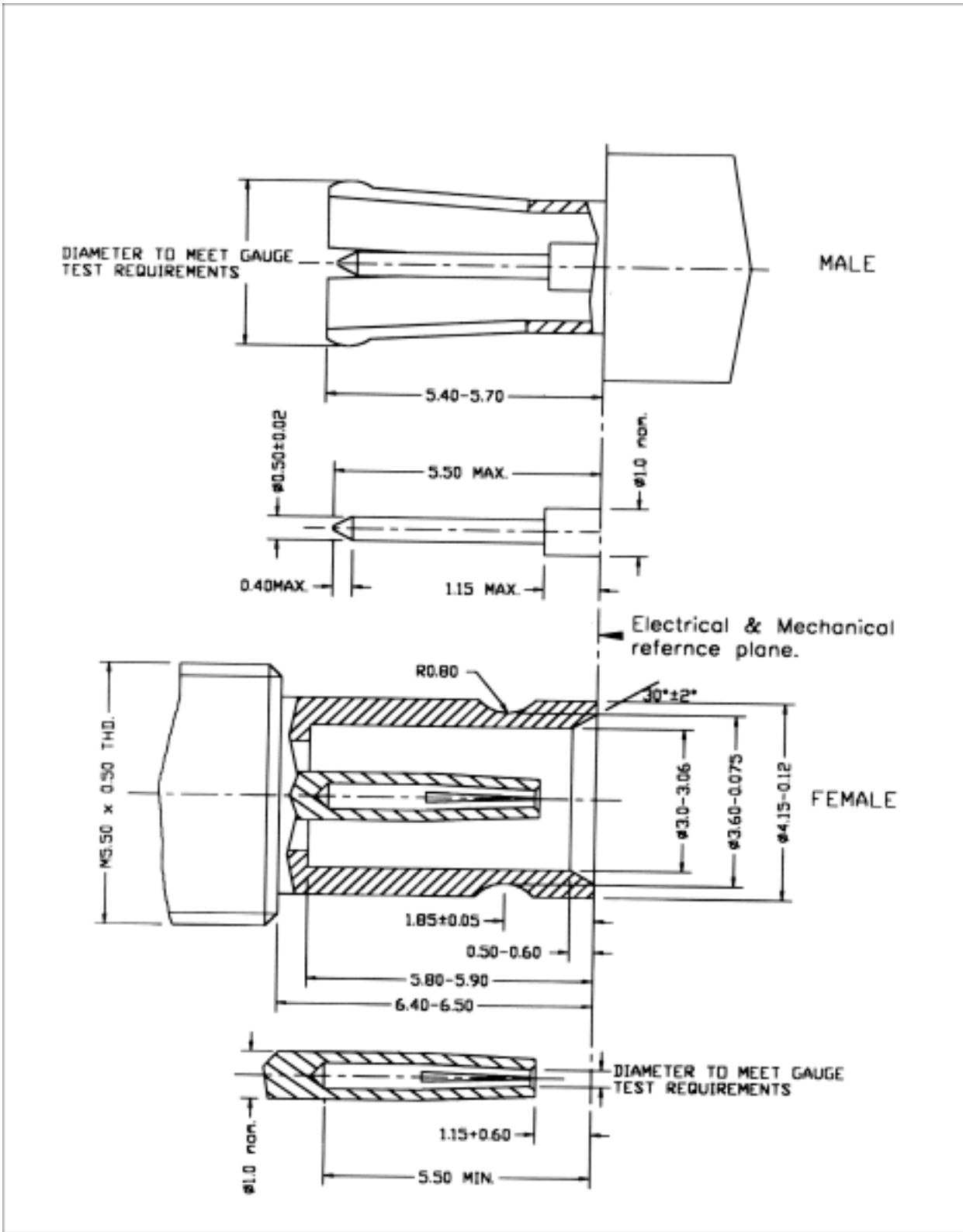
MATERIAL	
Body & Body components	Extruded Brass
Centre Contact Male	Extruded Brass
Centre Contact Female	Beryllium Copper
Outer Contact Female	Beryllium Copper
Dielectric	PTFE
Crimp Ferrule	Annealed Copper

MECHANICAL	
Cable Connectors:	
Mating	1/8 - 24 Threaded coupling



Coax Inserts – 1.0 / 2.3 Series

COAX
INSERTS





CONTENTS

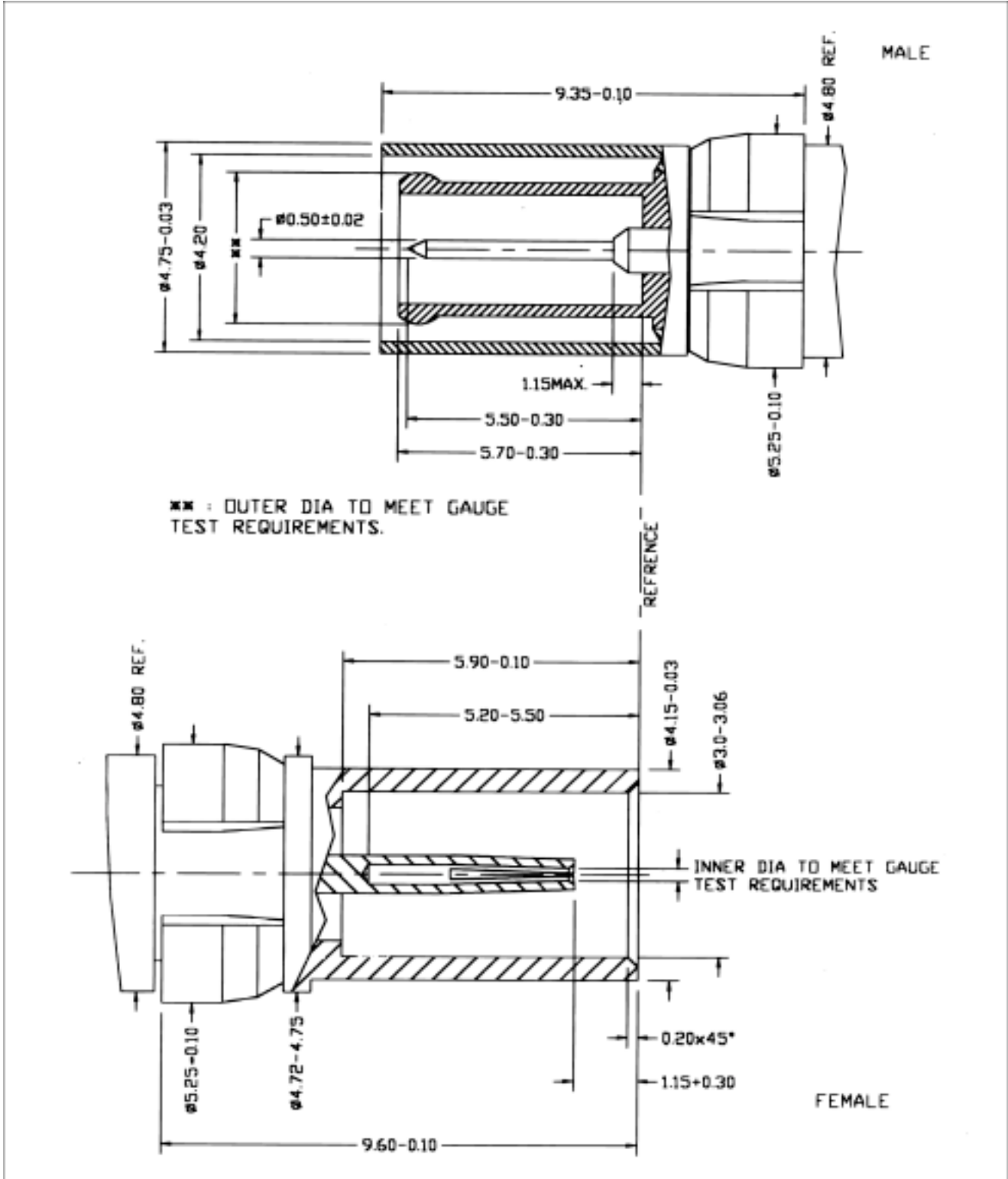
SEARCH

PREVIOUS

NEXT

Coax Inserts – 1.0 / 2.3 Series

COAX
INSERTS





CONTENTS

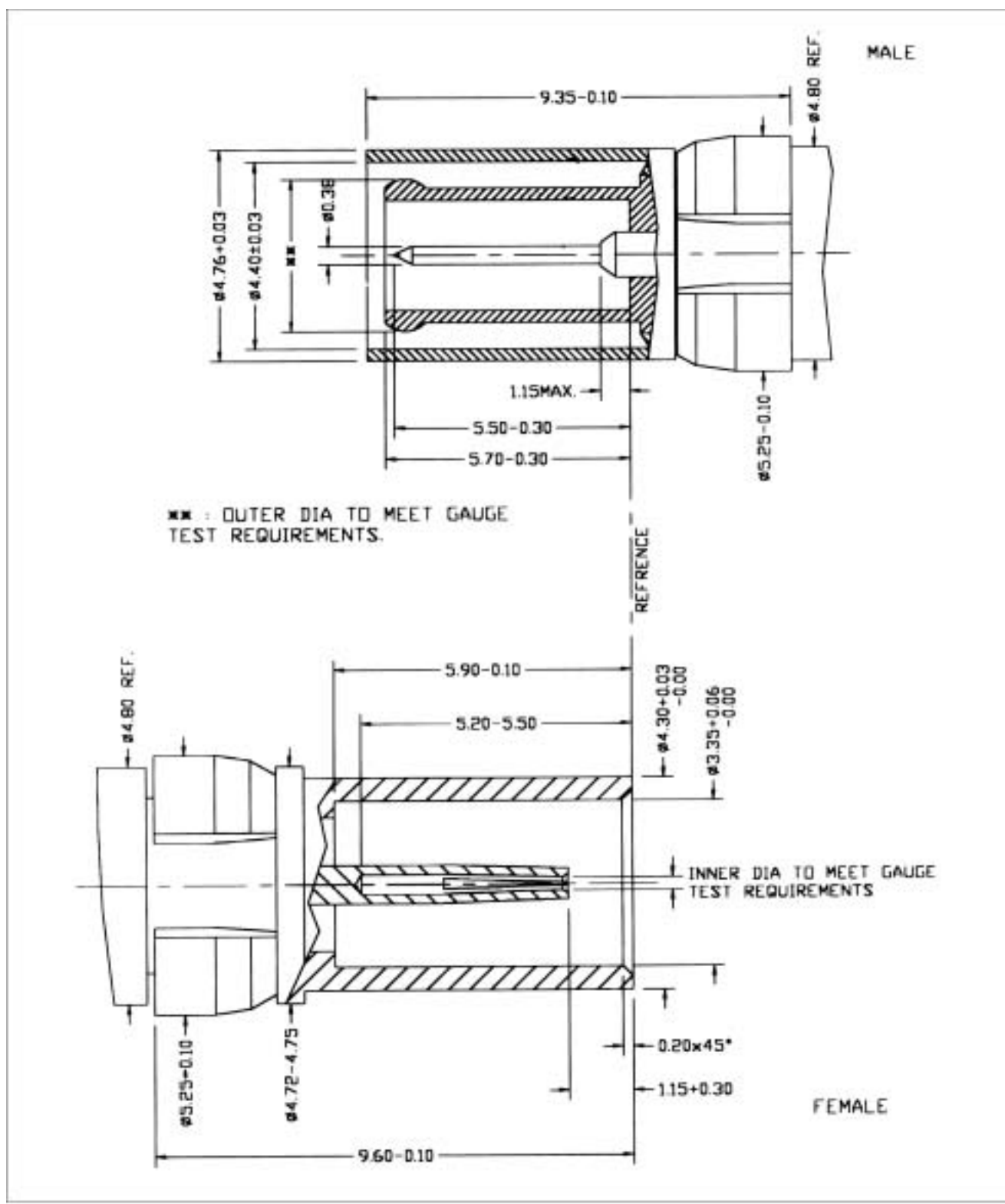
SEARCH

PREVIOUS

NEXT

Coax Inserts – 1.0 / 2.3 Series — 75 Ohms

COAX
INSERTS





CONTENTS

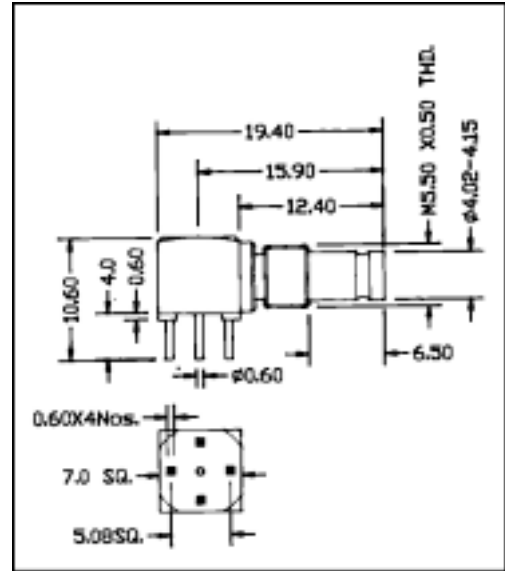
SEARCH

PREVIOUS

NEXT

Right Angle Female
PCB Mount

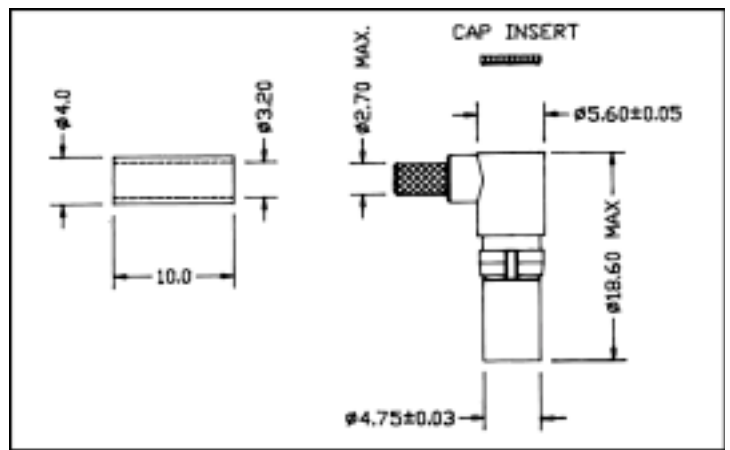
Order Code	Impedance Ohms	Mounting Details
SC15 FAB 05	50	MH - 04



COAX
INSERTS

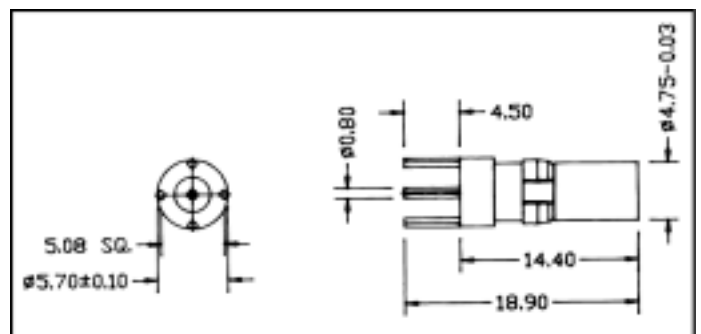
Right Angle Male

Order Code	Impedance Ohms	Cable Group RG/U
SC15 MA 01	50	316



Straight Male
PCB Mount

Order Code	Impedance Ohms	Mounting Details
SC15 PM 01	50	MH - 04





CONTENTS

SEARCH

PREVIOUS

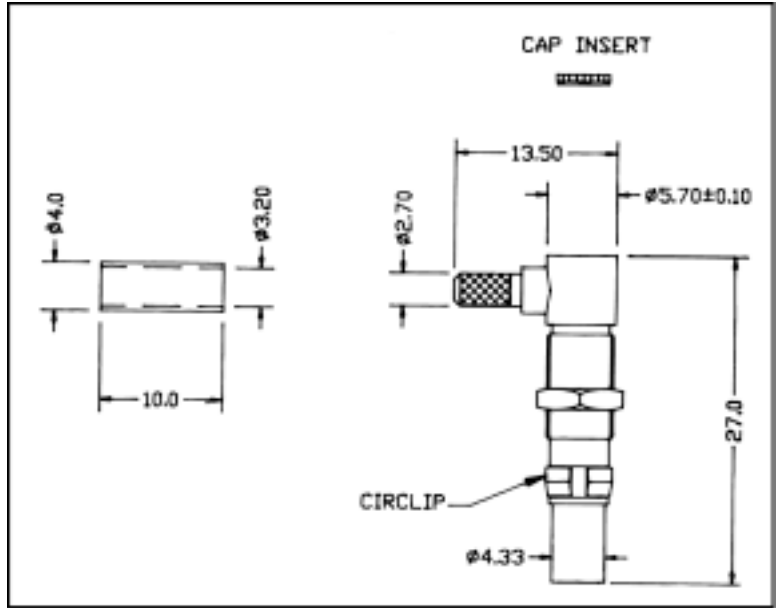
NEXT

Right Angle Female

COAX
INSERTS

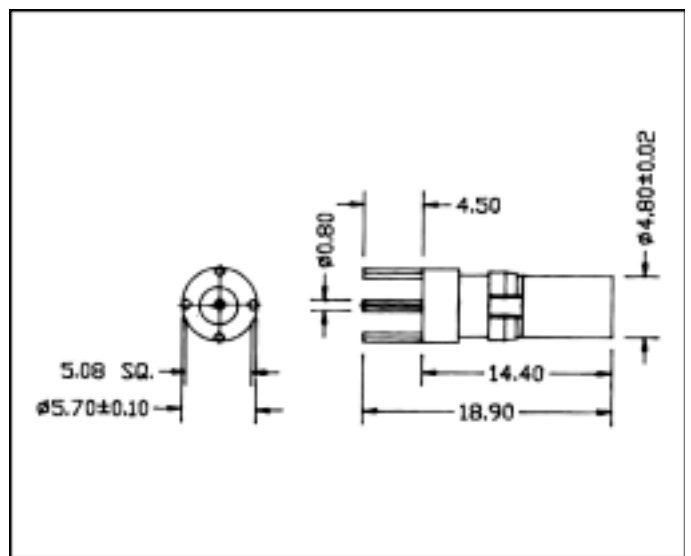
Order Code	Impedance Ohms	Cable Group RG/U
SC15-FAB 01	75	179 B/U

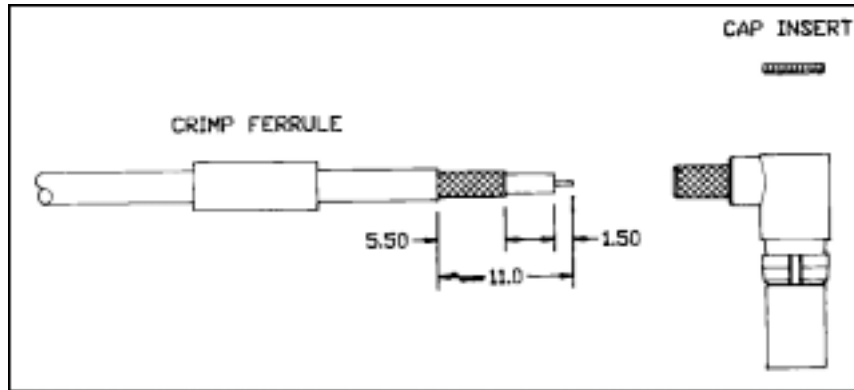
For Cable Assembly Refer M-02



Straight Male
PCB Mount

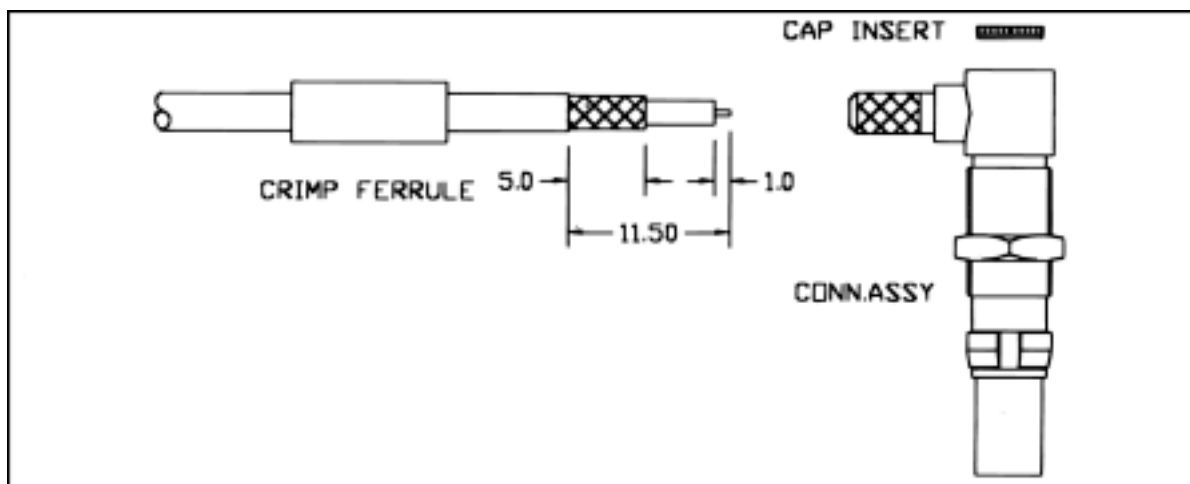
Order Code	Impedance Ohms	Mounting Details
SC16-PM 05	75	MH - 04





M 01

1. Slide the crimp ferrule over the cable.
2. trim the cable as per the dimensions shown above.
3. Insert trimmed cable into connector body and slide the crimp ferrule over the braid and crimp.
4. Align the center conductor of the cable into the slot of the centre contact and solder.
5. Press the cap insert.



M 02

1. Slide the crimp ferrule over the cable.
2. trim the cable as per the dimensions shown above.
3. Insert trimmed cable into connector body and slide the crimp ferrule over the braid and crimp.
4. Align the center conductor of the cable into the slot of the centre contact and solder.
5. Press the cap insert.



Mounting Details

COAX
INSERTS

