



1.6/5.6  
1.8/5.6

DIN 1.8/5.6 & 1.6/5.6 connectors are push on and push on threaded connectors respectively. These connectors are named after their outer diameter of the inner conductor and inner diameter of the outer conductor. 1.8/5.6 is 50 Ohms and 1.6/5.6 is 75 Ohms which are intermatable. The major advantage of this connector is that the plug and socket could be mounted on panels and plugged together.

**TECHNICAL SPECIFICATIONS**

**MATERIAL**

Plug outer contact and socket centre contact	Beryllium copper – heat treated
Body components	Extruded Brass
Dielectric	PTFE
Finish	
Outer contact and inner contact of plug and inner contact of socket	Gold plated on copper and nickel

**MECHANICAL**

Mating	
1.8/5.6 connector	Push-on
1.6/5.6 connector	Push-on with M9, 0.5 pitch threaded couplers
Engagement force	12N Max.
Disengagement force	8-10N approximately
Cable affixment	Clamp and Crimp

**ELECTRICAL**

Impedance	
1.8/5.6	50 Ohms
1.6/5.6	Ohms
Frequency Range	0 – 10 GHz for 50 Ohms 0 – 1 GHz for 75 Ohms
Insulation Resistance	500 Meg Ohms (Min)
Voltage proof	1000 Volt ms at sea level
Centre Contact Resistance	4.0 Milli ohms (Max)
Other Contact Resistance	2.0 Milli ohms (Max)
VSWR	1.22 maximum at 10 GHz for 50 Ohms 1.22 maximum of 1 GHz for 75 Ohms

**ENVIRONMENTAL**

Temp. severity	- 55°C to + 1205°C
Damp Heat	H-13

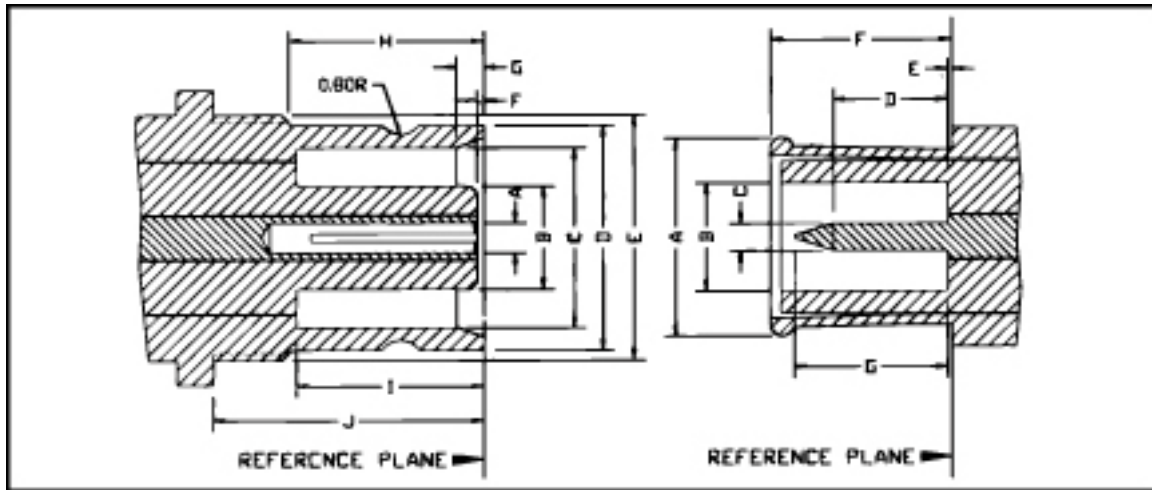


# Interface Dimensions – 1.6/5.6 & 1.8/5.6

1.6/5.6  
1.8/5.6

PLUG

JACK



LTR (dim. of)	JACK	
	MIN	MAX
A	Note 2	
B	-	3.80
C	6.60	6.69
D	8.10	8.25
E	M9 x 0.50 Thd.	
F	0.25	-
G	0.90	1.10
H	7.00	7.50
I	6.70	-
J	9.70	-

LTR (dim. of)	JACK	
	MIN	MAX
A	Note 1	
B	4.00	-
C	0.97	1.03
D	3.90	4.30
E	-	0.15
F	6.40	6.60
G	-	5.50

Note 1 : Outer diameter to meet the specified insertion / withdrawal force of this standard.

Note 2 : Inner diameter to meet gauge test requirements.

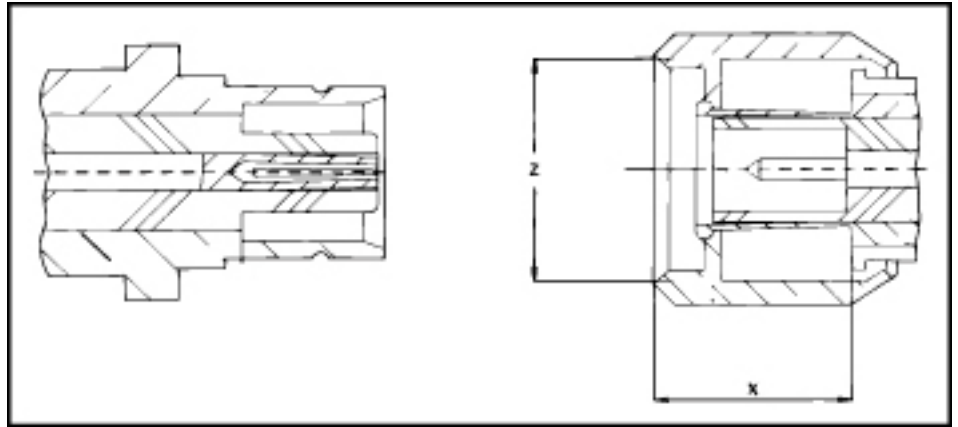
ALL DIMENSIONS ARE IN MM



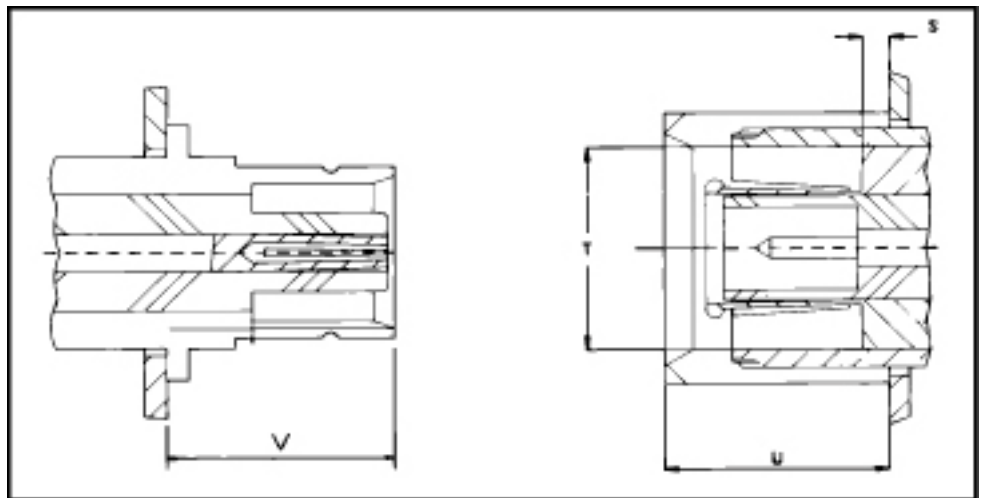
# Interface Dimensions of Locking Devices

1.6/5.6  
1.8/5.6

THREAD



SLIDE IN RACK



LTR	MM	
	MIN	MAX
S	1.0	1.25
T	8.30	8.39
U	-	9.8
V	10.4	10.6
X	-	9.2
Z	M9 x 0.5	

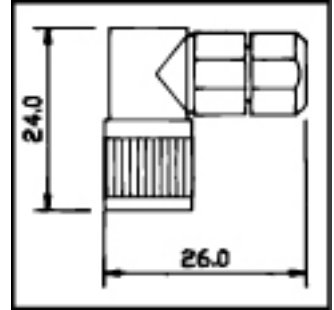
ALL DIMENSIONS ARE IN MM



1.6/5.6  
1.8/5.6

Right Angle Plug - Threaded  
Clamp Type

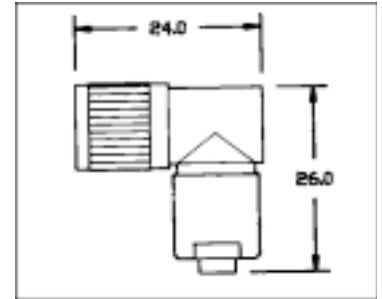
Order Code	Impedance Ohms	Applicable Cable
SC6 A 02 - T	75	25 C - 2V
SC6 A 04 - T	75	RG 59



For Cable Assembly Refer Fig. F 01

Right Angle Plug - Threaded  
Clamp Type

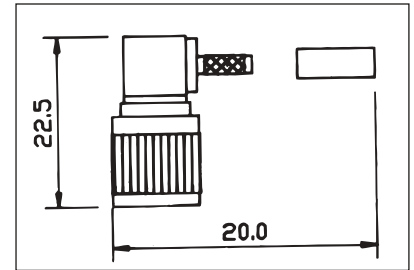
Order Code	Impedance Ohms	Applicable Cable
SC6 A 01 T	50	174, 188, 316



For Cable Assembly Refer Fig. F 06

Right Angle Plug - Threaded  
Crimp Type

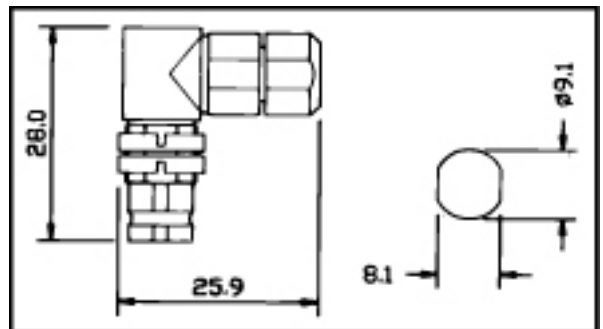
Order Code	Impedance Ohms	Applicable Cable (RG/U)
SC6 A 09 - T	50	174, 188, 316
SC6 A 19 - T	75	179, 317



For Cable Assembly Refer Fig. F 02

Right Angle Jack  
Clamp Type

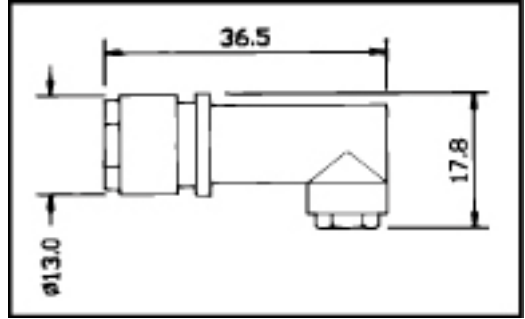
Order Code	Impedance Ohms	Applicable Cable (RG/U)
SC6 AR 01	75	2.5 C - 2V
SC6 AR 02	75	RG 59



For Cable Assembly Refer Fig. F 01



Right Angle Plug  
Push-on Type

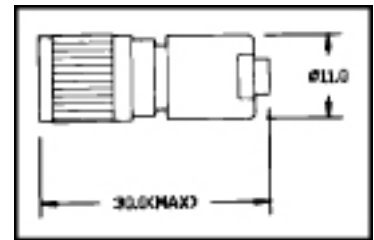


1.6/5.6  
1.8/5.6

Order Code	Impedance Ohms	Applicable Cable
SC6 A - 01	50	174, 188, 316
SC6 A - 11	75	179, 187

Cable Assembly F - 04

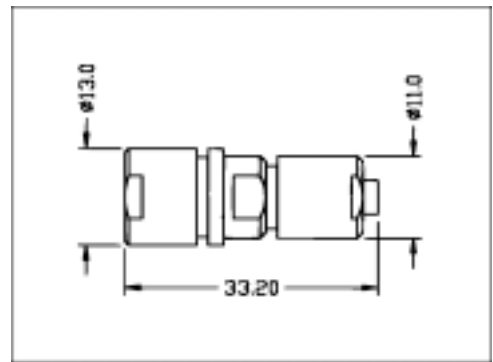
Straight Plug  
Clamp Type



Order Code	Impedance Ohms	Applicable Cable (RG/U)
SC6 M 01 T	50	174, 188, 316
SC6 M 02 T	75	179, 182

For Cable Assembly Refer Fig. F 06

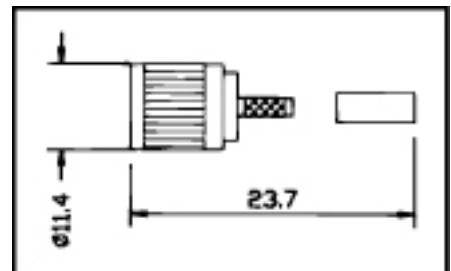
Straight Plug  
Push-on



Order Code	Impedance Ohms	Applicable Cable (RG/U)
SC6 M 01	50	174, 188, 316
SC6 M 12	75	179, 187

For Cable Assembly Refer Fig. F 05

Straight Plug  
Crimp Type



Order Code	Impedance Ohms	Applicable Cable (RG/U)
SC6 M 09 - T	50	174, 188, 316
SC6 M 19 - T	75	179, 187

For Cable Assembly Refer Fig. F 03



CONTENTS

SEARCH

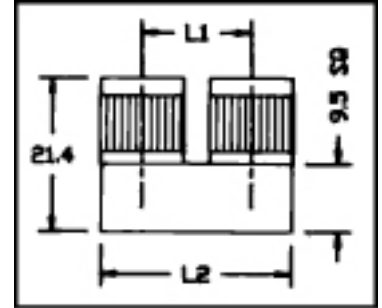
PREVIOUS

NEXT

U - Link Plug

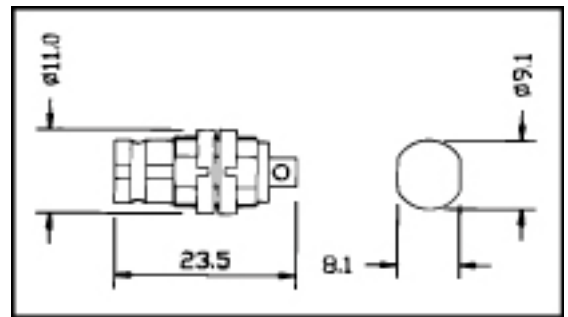
1.6/5.6  
1.8/5.6

Order Code	Impedance Ohms	L1	L2
SC6 U 01 - T	75	15	26
SC6 U 02 - T	75	30	41



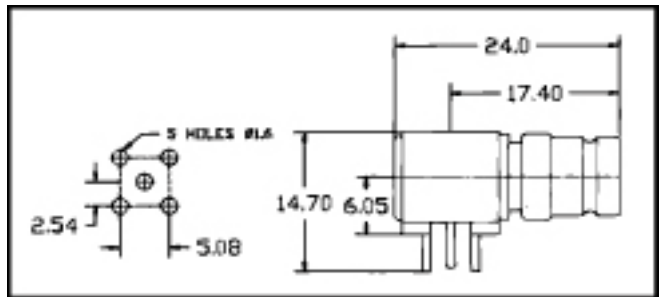
Bulk Head Receptacle - Threaded

Order Code	Impedance Ohms
SC6 F 01 - T	75



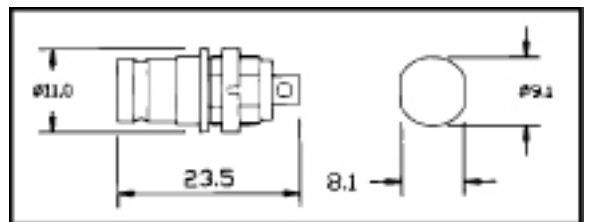
Right Angle Socket  
PCB Mount

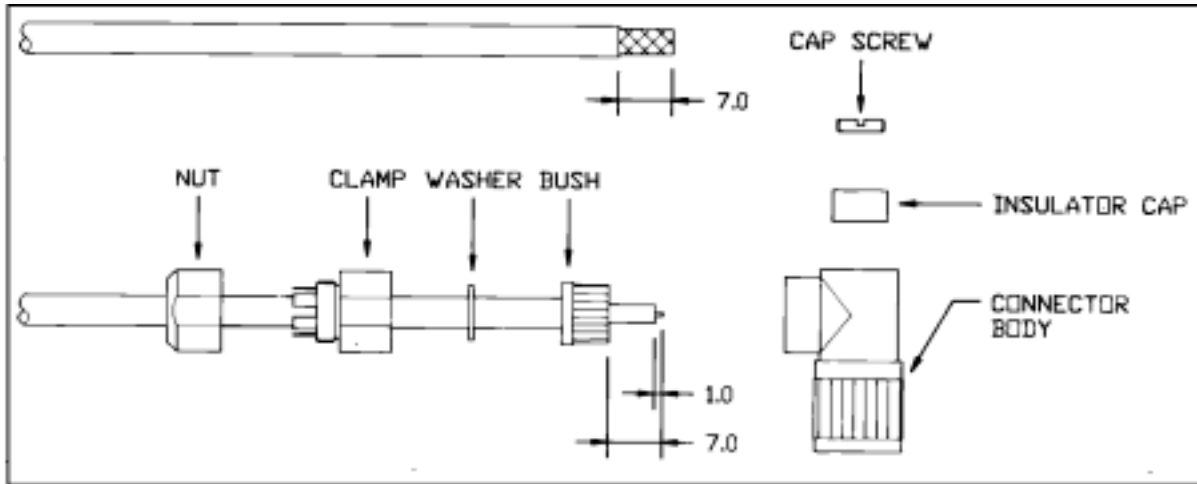
Order Code	Impedance Ohms
SC6 FA - 07	50



Bulk Head Receptacle  
Push-on Type

Order Code	Impedance Ohms
SC6 F 01	50



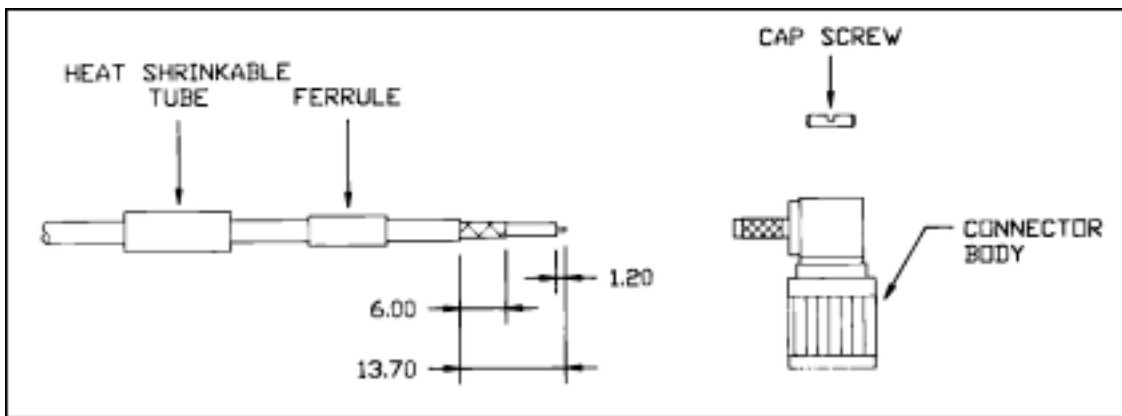


1.6/5.6  
1.8/5.6

F 01

1. Strip the cable as per dimensions shown in figure.
2. Insert nut, clamp, washer and bush into the cable fold back the braid over the bush into the cable fold back the braid over the bush.
3. Remove the dielectric as per dimensions shown in figure.
4. Insert the sub-assembly into the body. Solder the centre conductor of cable and centre contact.
5. Tighten the assembly with nut.
6. Fit insulator cap and cap screw.

Note: Plug is shown, all other details are relevant for jack. (06FA01)



F 02

1. Strip the heat shrinkable tube and the ferrule over cable.
2. Strip the cable as per dimensions shown in figure.
3. Insert the cable into the body. Solder the centre conductor and the centre contact.
4. Slide the ferrule until it butts against the body and crimp the ferrule.
5. Shrink the heat shrinkable tube over the ferrule.
6. Fit the cap screws.



CONTENTS

SEARCH

PREVIOUS

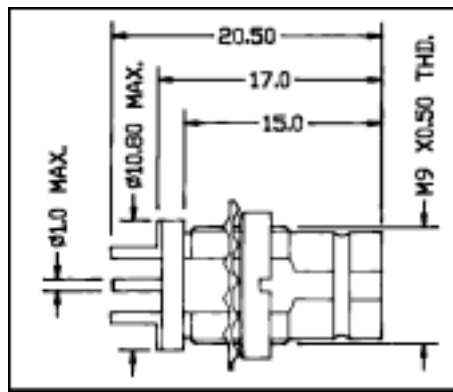
NEXT

PCB Receptacles

Straight Socket

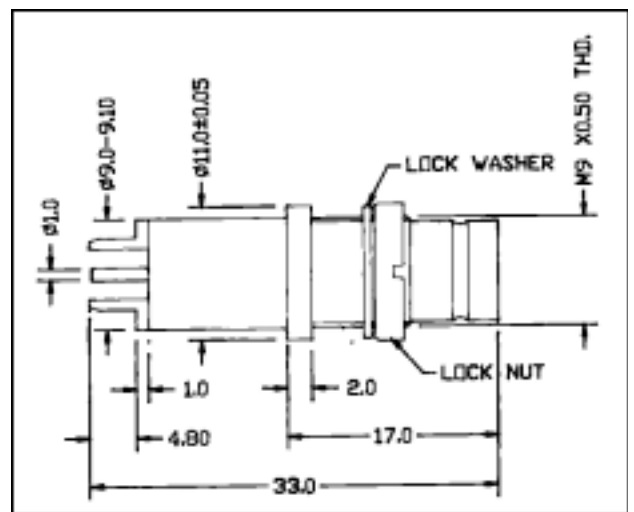
1.6/5.6  
1.8/5.6

Order Code	Impedance Ohms	Mounting Details
SC6 F - 07 T	75	MH - 05 Front MH - 06 Rear PCB



Straight Socket

Order Code	Impedance Ohms	Mounting Details
SC6 F17 T	75	MH - 05 Front MH - 06 Rear PCB







CONTENTS

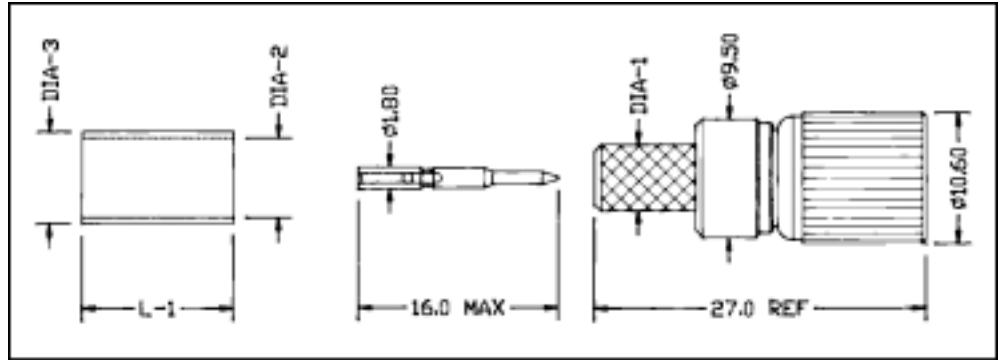
SEARCH

PREVIOUS

NEXT

**Straight Plugs**

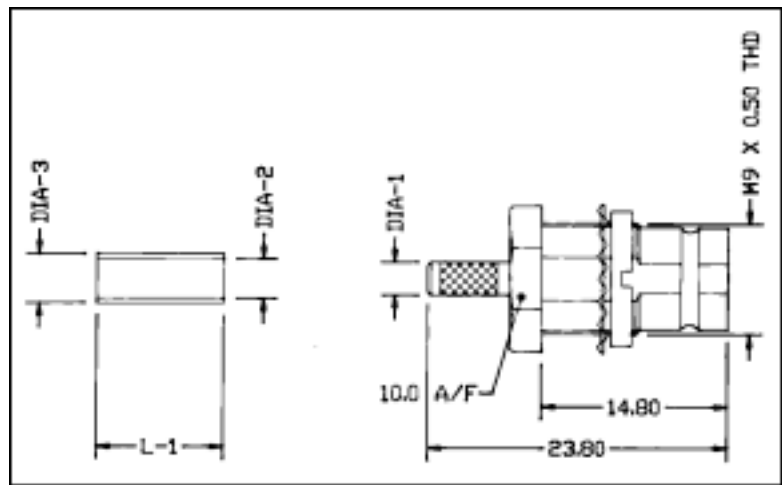
1.6/5.6  
1.8/5.6



Our Code	Cable Group	Impedance Ohms	Dia - 1	Dia - 2	Dia - 3	L - 1
SC6 M 12 T	RG 59 B/U	75	5.35	6.50	7.50	12.50
SC6 M 24 T	BT 3002	75	3.50	4.40	5.40	10.00
SC6 M 84 T	BT 2003	75	5.35	7.20	8.20	10.00
SC6 M 94 T	BT 2002	75	3.65	5.50	6.35	12.50

For Cable Assembly details refer fig. F07

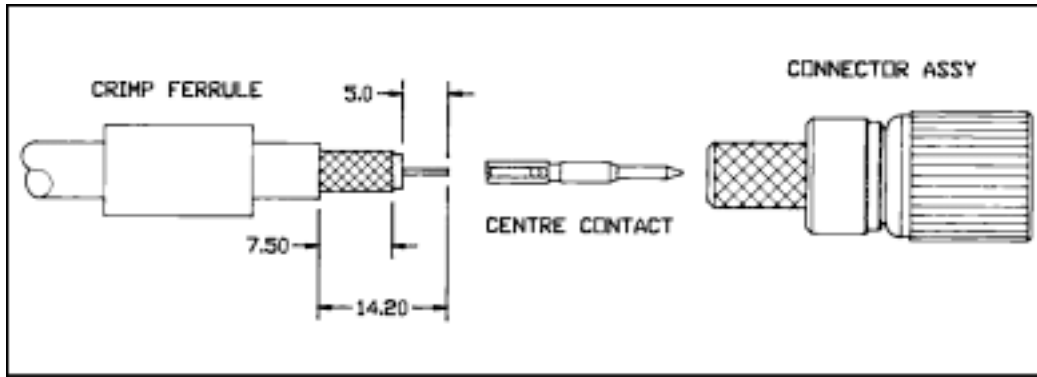
**Straight Plugs**



Our Code	Cable Group	Impedance Ohms	Dia - 1	Dia - 2	Dia - 3	L - 1
SC6 SR 09 T	RG 59 B/U	75	5.35	6.50	7.50	12.50
SC6 SR 12 T	BT 3002	75	3.50	4.40	5.40	10.00
SC6 SR 22 T	BT 2003	75	5.35	7.20	8.20	10.00

For Cable Assembly details refer fig. F08

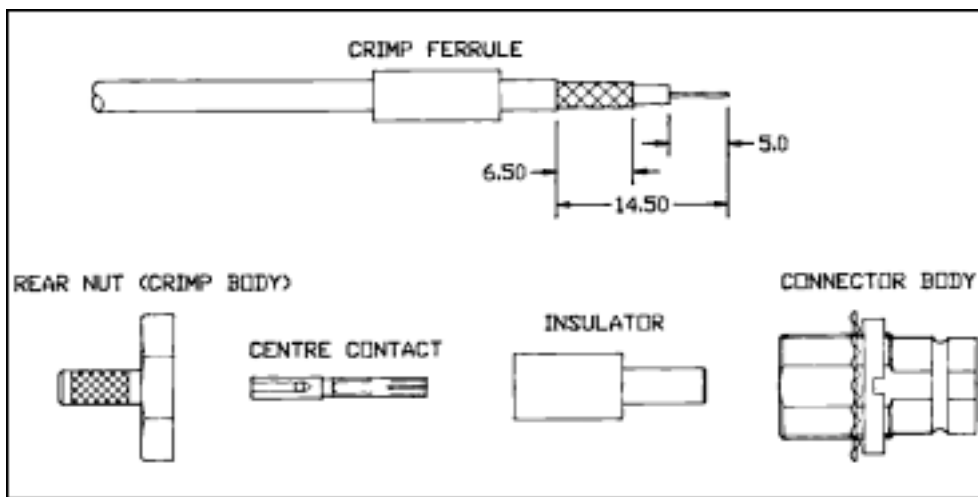
Mounting Details MH - 05



1.6/5.6  
1.8/5.6

F07

1. Slide the crimp ferrule into the cable.
2. Trim the cable as per dimensions shown in figure.
3. Fit the centre contact over the center conductor and crimp or solder firmly to the cable.
4. Slide the sub-assembly into the connector assembly until the centre contact gets locked in the position.
5. Slide the crimp ferrule until it butts against the connector assembly and crimp the ferrule.

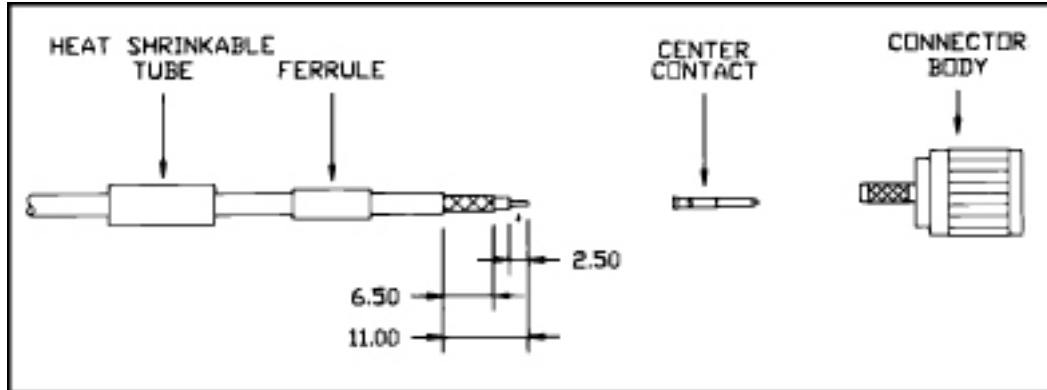


F08

1. Slide the crimp ferrule into the cable.
2. Trim the cable as per dimensions shown above.
3. Fit the centre contact over the center conductor and crimp or solder firmly to the cable.
4. Slide the rear nut (crimp body) onto cable slide the crimp ferrule forward till it butts against rear nut and crimp.
5. Slide the insulator onto centre contact until the centre contact gets locked in the position.
6. Slide the connector body into rear nut (crimp nut) and tighten the entire assembly.

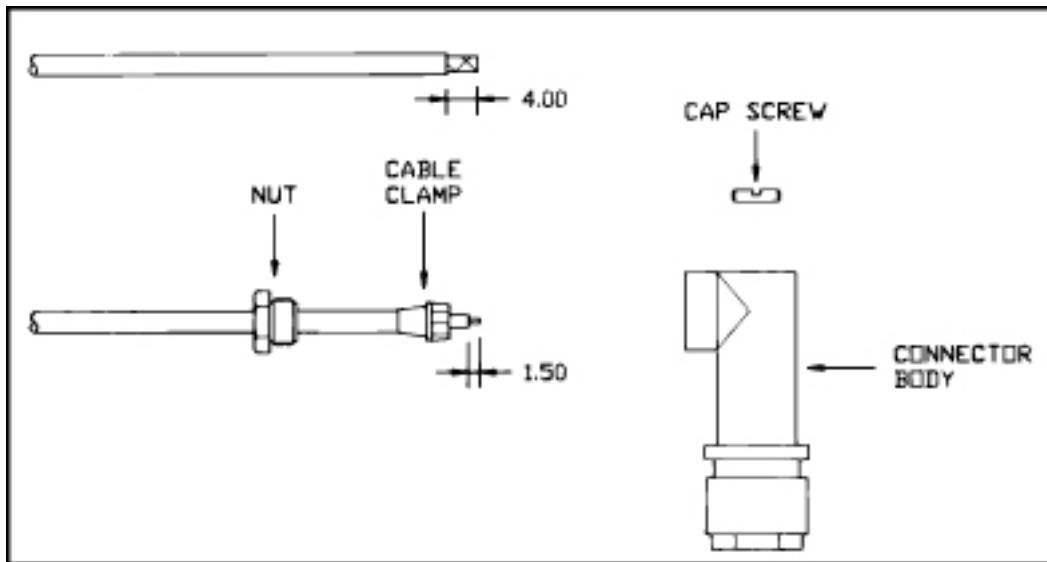


1.6/5.6  
1.8/5.6



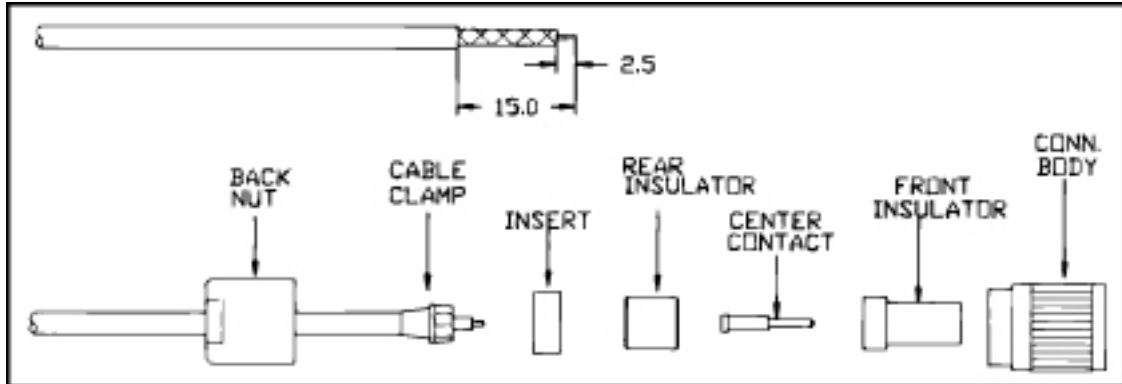
F03

1. Slide the heat shrinkable tube and the ferrule over cable.
2. Strip the cable as per dimensions shown in figure.
3. Fit the centre contact over the centre conductor of cable and solder the centre contact firmly to the cable.
4. Insert the sub-assembly into body and slide the ferrule until it butts against the body and crimp the ferrule.
5. Shrink the heat shrinkable tube over the ferrule.



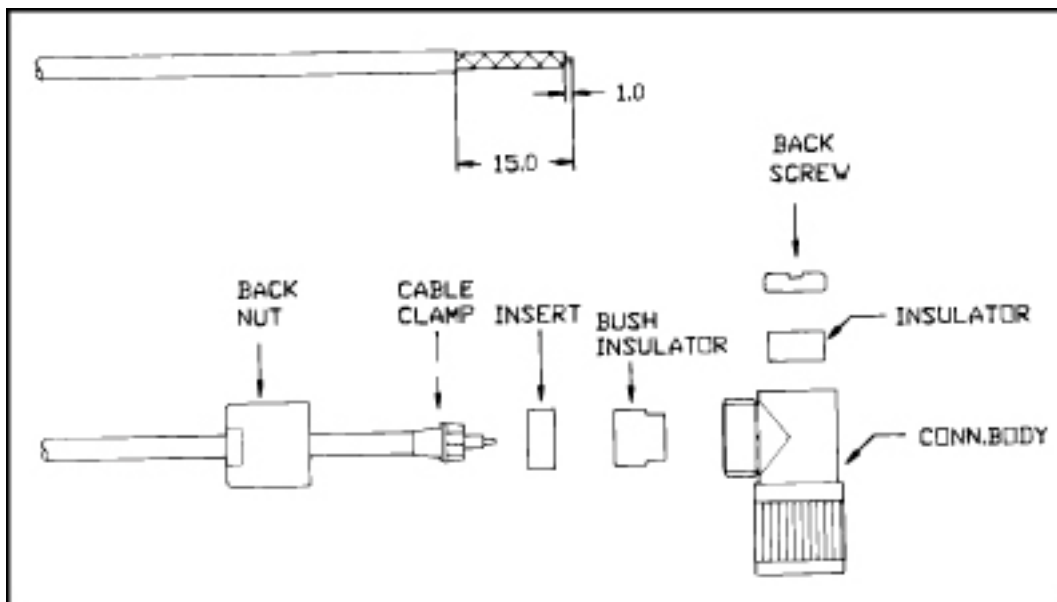
F04

1. Insert back nut and cable clamp over cable.
2. Trim the cable as per dimensions shown in the figure.
3. Comb out the braid and fold them over cable clamp as shown in the figure and trim the excess braid.
4. Insert the cable into the connector body. Solder the centre conductor of cable and centre contact.
5. Tighten the nut and fit the cap screw.



F05

1. Strip the cable as per dimensions show in figure.
2. Insert nut, clamp over the cable and fold back the braid over the cable.
3. Trim the braids as shown in figure.
4. Slide the insert, rear insulator to the clamp.
5. Solder the centre conductor of the cable into the center contact.
6. Insert front insulator and insert sub-assembly parts into the connector body and tight it with back nut.



F06

1. Strip the cable as per dimensions shown in figure.
2. Insert nut, clamp, over the cable and fold back the braid over the cable.
3. Trim the braids as shown in figure.
4. Slide the insert, bush and insulator to the cable.
5. Insert the sub-assembly into the body and solder the center conductor of the cable to the center contact.
6. Tighten the sub-assembly with connector back nut.
7. Fit the insulator cap and cap screw.

1.6/5.6  
1.8/5.6