



S M B



SMB connectors are snap-on connectors, which are suitable for quick fit and remove application on frequencies upto 4 GHz. Since these connectors are sub miniature in size, these are used for compact space area.

TECHNICAL SPECIFICATIONS

MATERIAL	
Body & Body components	Brass
Female Contact	Beryllium Copper - heat treated
Crimp Ferrule	Annealed Copper
Gaskets	Silicone Rubber

ELECTRICAL	
Impedance	50 Ohms
Frequency Range	0 – 4000 MHz
Insulation Resistance	1000 Meg Ohms (Max)
Voltage Rating	500 V Peak
Dielectric Withstanding Voltage	1500 Volts RMS
VSWR	1.35 + 0.04 F
Insertion Loss	0.3 db for Straight 0.6 db for Angle

MECHANICAL	
Mating	Snap-on
Cable affixment	Crimp
Cable Retention	110N (Max.)
Engagement & disengagement Forces	63 N max.
Mating cycle recommended	500 times

ENVIRONMENTAL	
Temp. Range	-65° C to + 160° C
Impact	S141 KM/S ²
Vibration	V14 10 to 2000 Hz
Damp Heat severity	H13

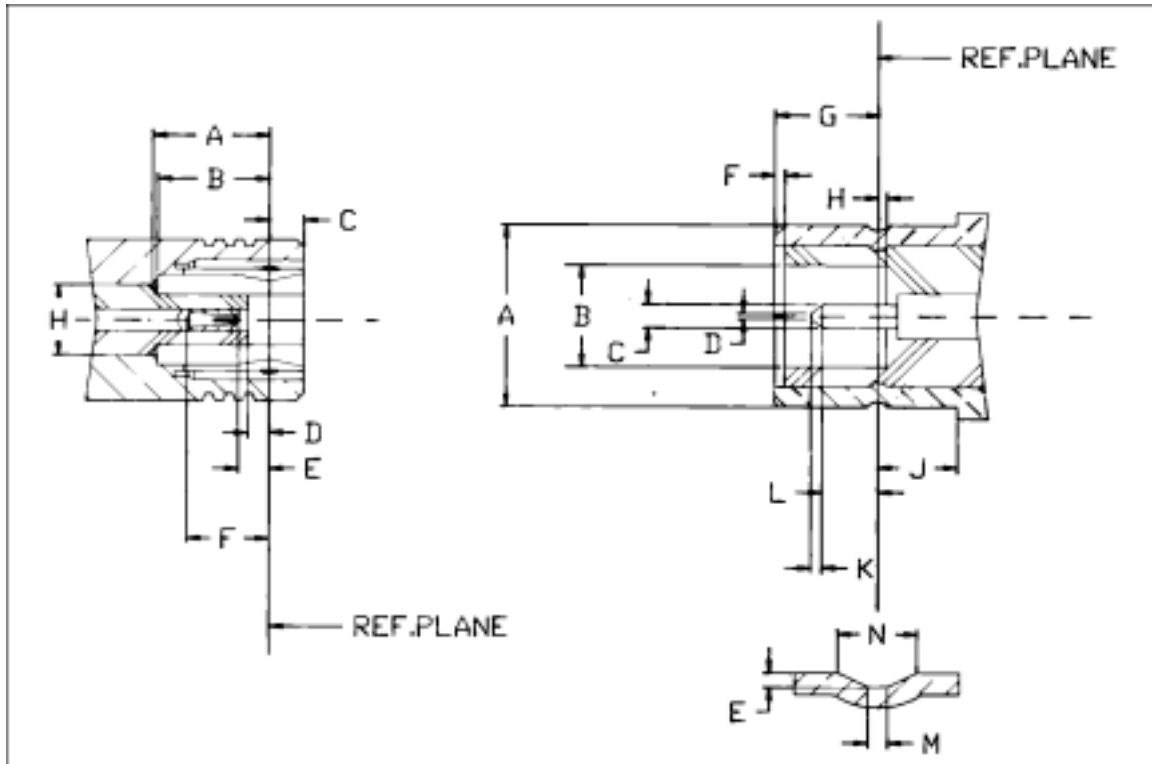


Interface Dimensions – SMB Series

PLUG

JACK

SMB



LTR (dim. of)	PLUG	
	MIN	MAX
A	3.58	-
B	3.58	-
C	-	1.63
D	0.18	-
E	0.18	0.94
F	2.97	-
H	3.03 Nom	-

LTR (dim. of)	JACK	
	MIN	MAX
A	-	3.71
B	2.08	-
C	0.48	0.53
D	-	0.25
E	0.15	0.25
F	0.00	-
G	3.33	3.58
H	-	0.18
J	1.65	-
K	0.25	-
L	1.32	-
M	0.28	0.38
N	0.69	0.94



CONTENTS

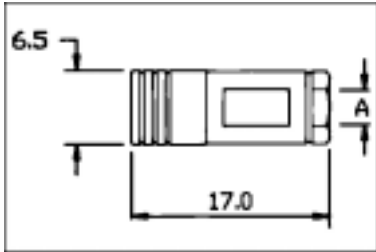
SEARCH

PREVIOUS

NEXT

S M B

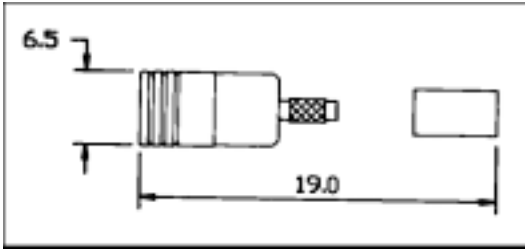
Straight Plug
Clamp Type



Order Code	US - MIL No.	Impedance Ohms	Cable Group	A Dia
SC11-M 01	UG 1451/U	50	178, 196	2.2
SC11-M 02	UG 1456/U	50	174, 188, 316	2.9
SC11-M 12	UG 1456/U	75	179, 187	2.9

For Cable Assembly Refer K-01

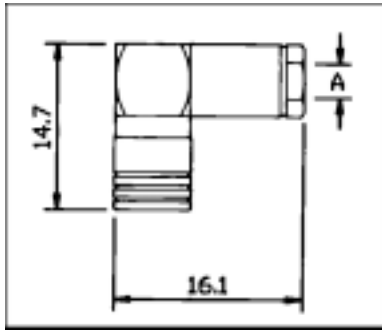
Straight Plug
Crimp Type



Order Code	Impedance Ohms	Cable Group RG / U
SC11-M 03	50	178, 196
SC11-M 04	50	174, 188, 316
SC11-M 19	75	179, 187

For Cable Assembly Refer K-02

Right Angle Plug
Clamp Type



Order Code	US - MIL No.	Impedance Ohms	Cable Group	A Dia
SC11-A 01	UG 1452/U	50	178, 196	2.2
SC11-A 02	UG 1457/U	50	174, 188, 316	2.9
SC11-A 12	UG 1457/U	75	179, 187	2.9

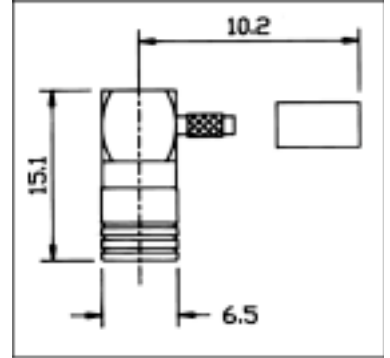
For Cable Assembly Refer K-03



Right Angle Plug
Crimp Type

Order Code	Impedance Ohms	Cable Group RG / U
SC11-A 03	50	178, 196
SC11-A 04	50	174, 188, 316
SC11-A 19	75	179, 187

For Cable Assembly Refer K-04

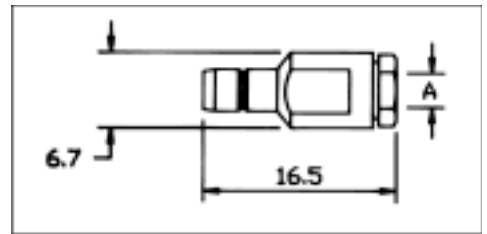


S M B

Straight Jack
Clamp Type

Order Code	Impedance Ohms	Cable Group RG/U	L Dimn
SC11-SR 01	50	178, 196	2.2
SC11-SR 02	50	174, 188, 316	2.9
SC11-SR 12	75	179, 187	2.9

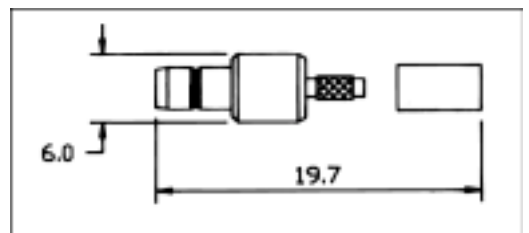
For Cable Assembly Refer K-01



Straight Jack
Crimp Type

Order Code	Impedance Ohms	Cable Group RG/U
SC11-SR 03	50	178, 196
SC11-SR 09	50	174, 188, 316
SC11-SR 19	75	179, 187

For Cable Assembly Refer K-02





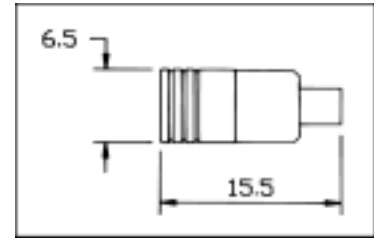
CONNECTORS FOR SEMI RIGID CABLES

S M B

Straight Plug

Order Code	Impedance Ohms	Cable Group RG / U
SC11-M 06	50	405

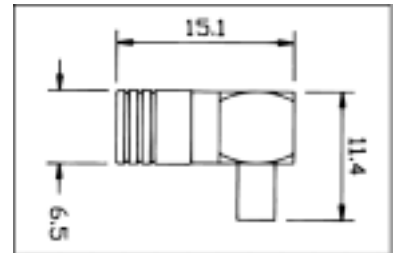
For Cable Assembly Refer K-05



Right Angle Plug

Order Code	Impedance Ohms	Cable Group RG / U
SC11-A 06	50	405

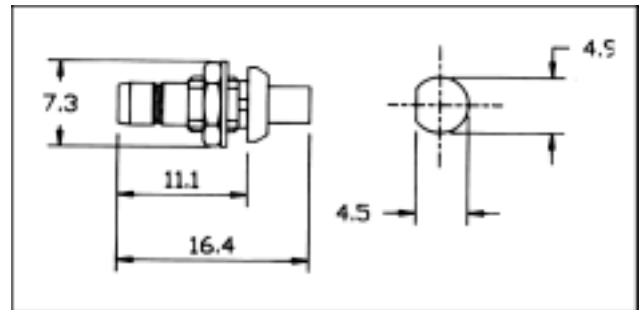
For Cable Assembly Refer K-06



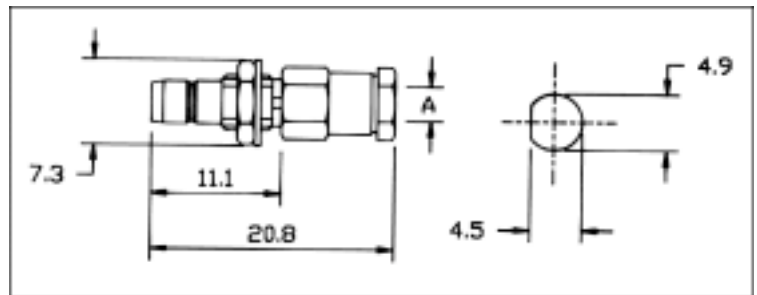
Bulk Head Jack

Order Code	Impedance Ohms	Cable Group RG / U
SC11-BR 06	50	405

For Cable Assembly Refer K-05



Bulk Head Jack Clamp Type

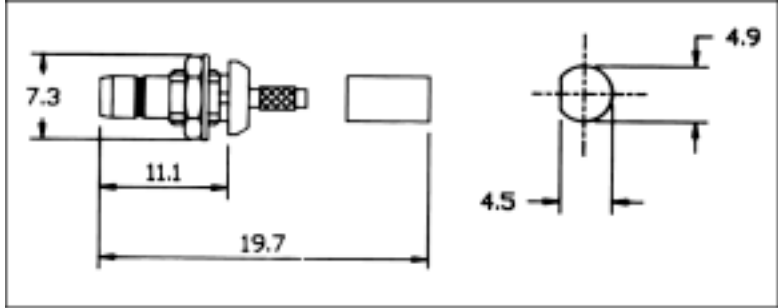


Order Code	US - MIL No.	Impedance Ohms	Cable Group	A Dia
SC11-BR 01	UG 1454/U	50	178, 196	2.2
SC11-BR 02	UG 1459/U	50	174, 188, 316	2.9
SC11-BR 12	UG 1459/U	75	179, 187	

For Cable Assembly Refer K-01



Bulk Head Jack
Crimp Type



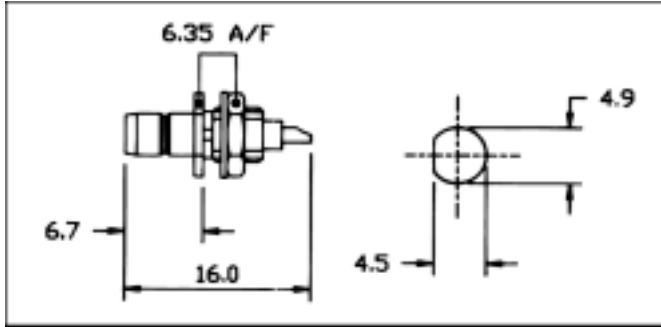
S M B

Order Code	Impedance Ohms	Cable Group RG / U
SC11-BR 03	50	178, 196
SC11-BR 09	50	174, 188, 316
SC11-BR 19	75	179, 187

For Cable Assembly Refer K-02

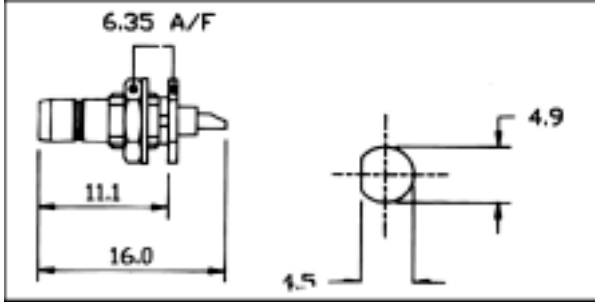
Bulk Head Receptacle
Rear Nut Fixing

Order Code	Impedance Ohms
SC11-F 01	50



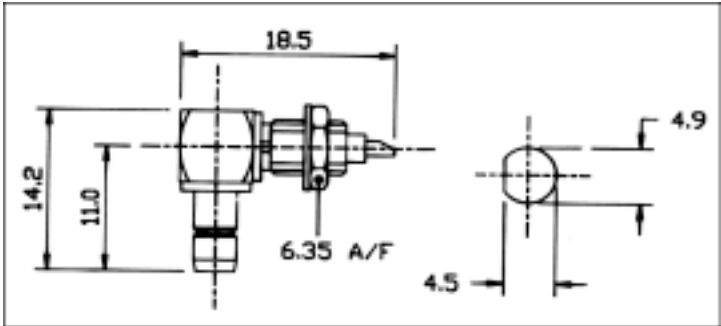
Bulk Head Receptacle
Front Nut Fixing

Order Code	Impedance Ohms
SC11-F 11	50



Right Angle Bulk Head
Receptacle

Order Code	Impedance Ohms
SC11-FAB 01	50





CONTENTS

SEARCH

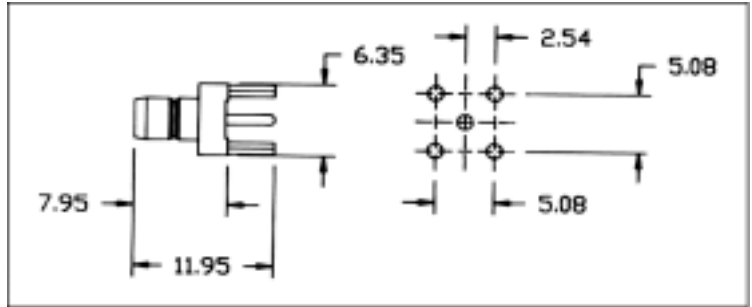
PREVIOUS

NEXT

S M B

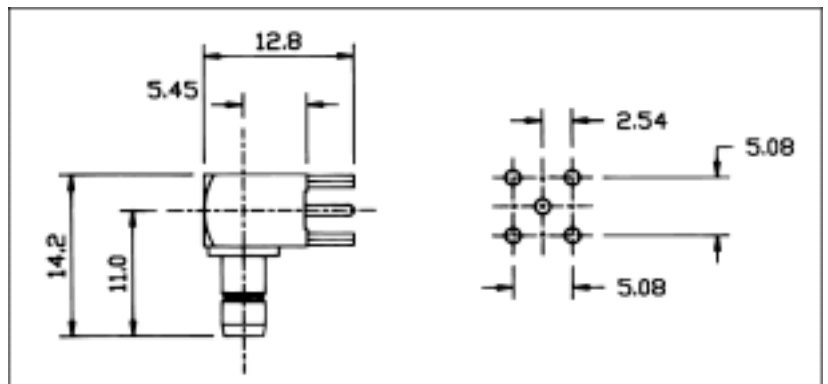
PCB Receptacles
Straight Receptacle

Order Code	Impedance Ohms
SC11-F 07	50



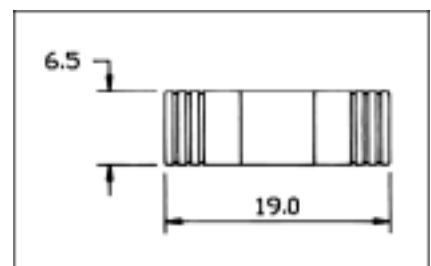
Right Angle Receptacle

Order Code	Impedance Ohms
SC11-FA 17	50



In-Series Adaptors
Plug - Plug

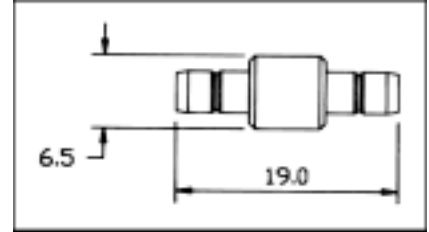
Order Code	Impedance Ohms
SC11-MM 01	50





Jack - Jack

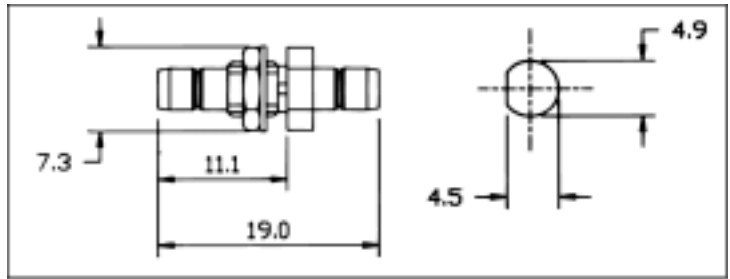
Order Code	Impedance Ohms
SC11-FF 01	50



S M B

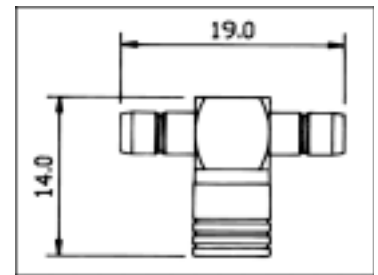
Jack - Jack
Bulk Head Mount

Order Code	Impedance Ohms
SC11-FB 01	50



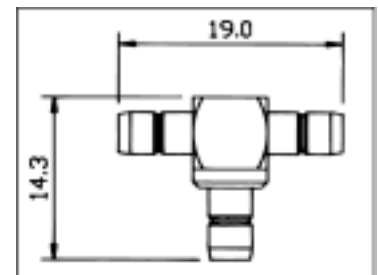
T-Adaptor
Jack - Plug Jack

Order Code	Impedance Ohms
SC11-T01	50



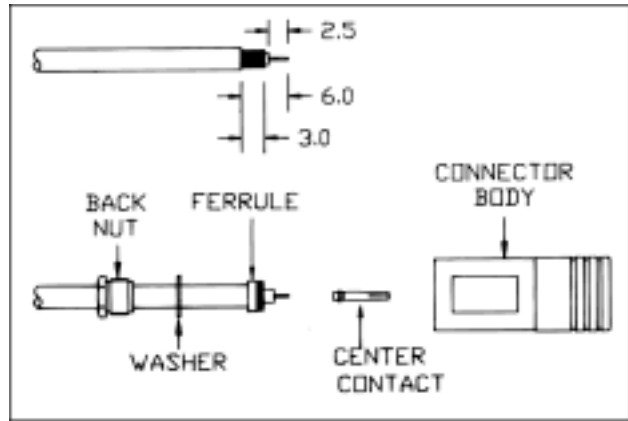
T-Adaptor
Jack - Jack - Jack

Order Code	Impedance Ohms
SC11-T02	50



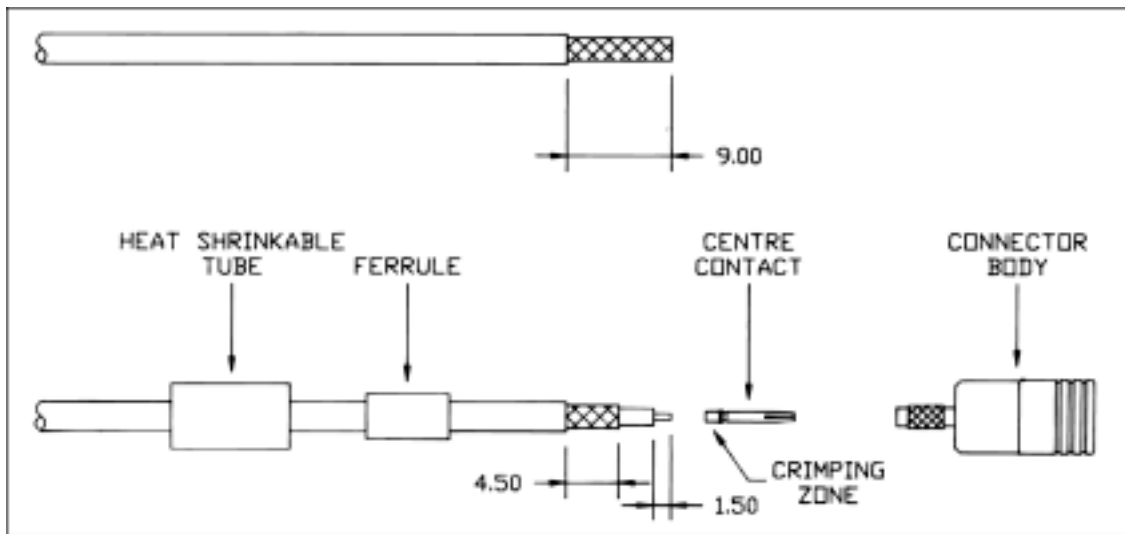


S M B



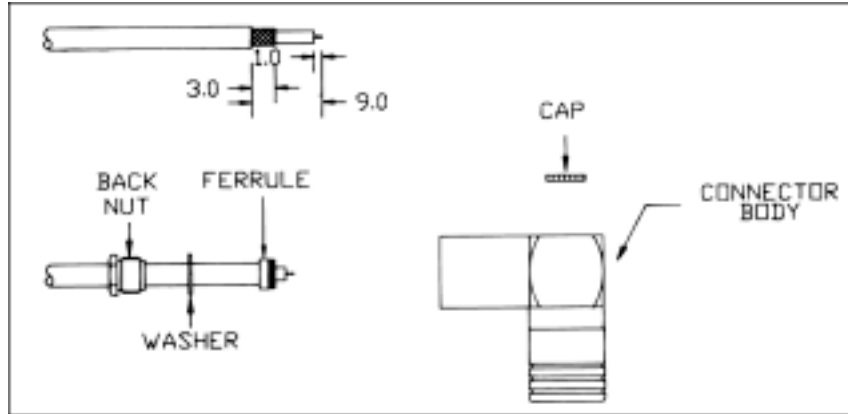
K 01

1. Strip the cable as per dimensions show in figure.
2. Insert the back nut, washer and ferrule over the cable.
3. Comb out the braid and fold them over ferrule as show in figure and trim the excess braid.
4. Solder the centre conductor of cable into the centre contact.
5. Insert the sub-assembly to the connector body and tighten them.



K 02

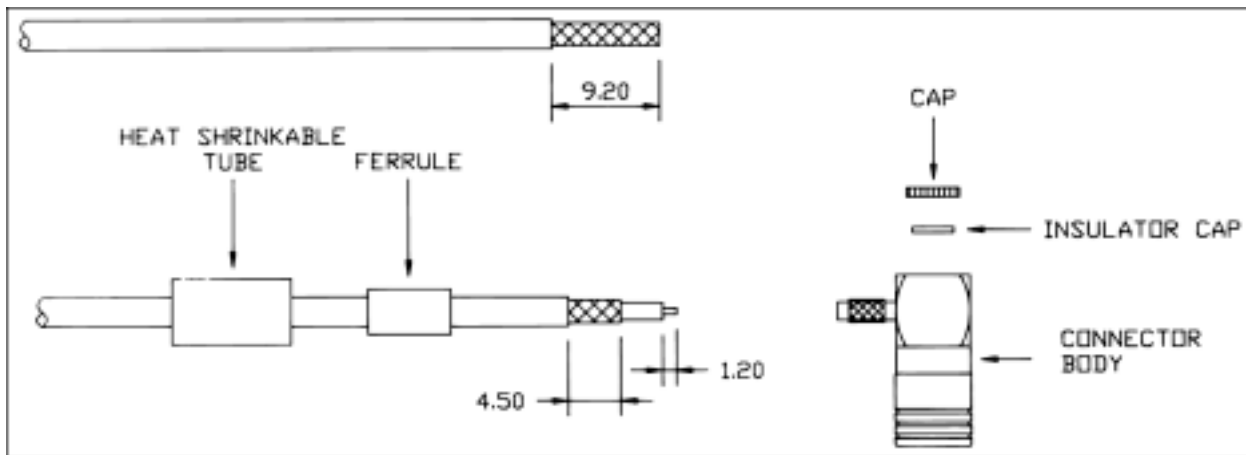
1. Slide the heat shrinkable tube and the ferrule over cable.
2. Strip the cable as per dimensions show in figure.
3. Fit the centre contact over the centre conductor of cable and crimp the centre contact firmly to the cable.
4. Insert the sub-assembly into body and slide the ferrule until it butts against the body and crimp the ferrule.
5. Shrink the heat shrinkable tube over the ferrule.



S M B

K 03

1. Strip the cable as per dimensions show in figure.
2. Slide the back nut, washer and ferrule over the cable.
3. Comb out the braid and fold them over ferrule as shown in figure and trim the excess braid.
4. Solder the centre conductor of the cable to the centre contact of the connector.
5. Screw the cap to the connector body.

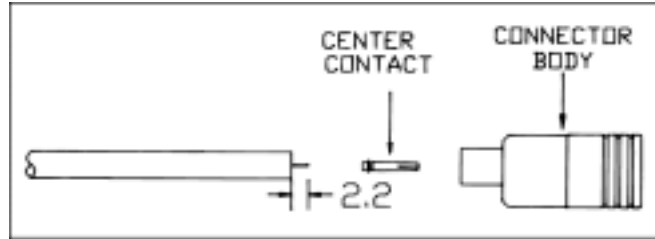


K 04

1. Slide the heat shrinkable tube and the ferrule over cable.
2. Strip the cable as per dimensions show in figure.
3. Insert the cable into the body. Solder the centre conductor of the cable and centre contact.
4. Slide the ferrule until it butts against the body and crimp the ferrule.
5. Shrink the heat shrinkable tube over the ferrule
6. Fit the insulator cap.

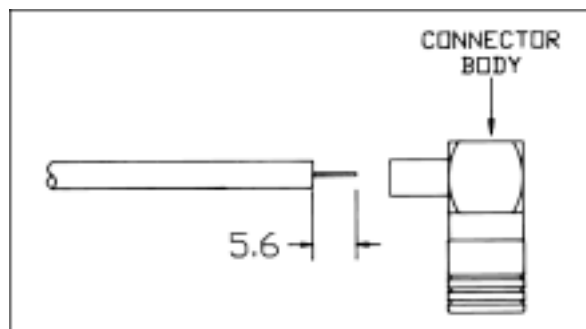


S M B



K 05

1. Strip the cable as per dimensions shown in figure.
2. Solder the centre conductor of the cable to the centre contact.
3. Insert the sub-assembly to the connector body.
4. Solder the outer conductor of the cable to the body of the connector.



K 06

1. Strip the cable as per dimensions shown in figure.
2. Solder the centre conductor of the cable to the centre contact.
3. Solder the outer conductor of the cable to the body of the connector.